



G Major Scale

Backing & Improvisation

Improvisation Tip:

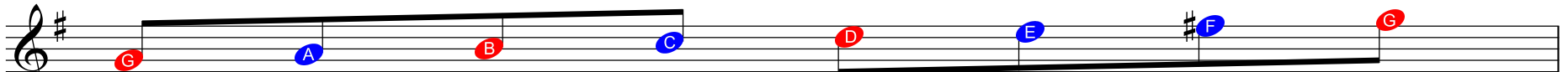
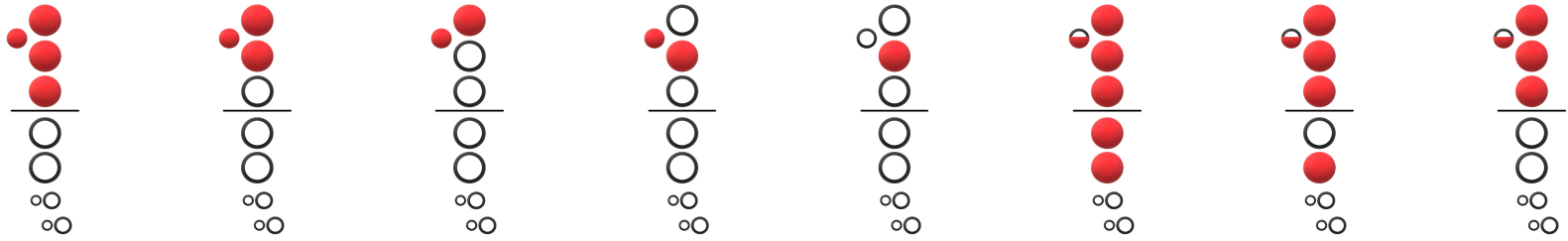
RED - The 1st, 3rd, 5th notes form the arpeggio (chord notes)
Ending an improvised phrase on one of these notes gives a stronger sound.

BLUE - These notes complete the rest of the scale.
Use these as passing notes to connect the chord tones together.

♩ = 85 Funk



(click)



1st(Root)

2nd

3rd

4th

5th

6th

7th

Root



Improvise here! ...

x8